

Baca Grande Water and Sanitation District  
Monthly Operations Report

January 15<sup>th</sup>, 2025



Main Repair on Peaceful way in November

## Facilities and Staff Updates

In Service

Repaired  
last month

Out of  
Service

Water Facilities											
Well 18		Moonlight Transfer Station		Ridgeview Transfer Station		Fallen Tree Transfer Station		Pinecone Booster Station		Shumei Booster Station	
Pump 1	Pump 2	Pump 1	Pump 2	Pump 1	Pump 2	Pump 1	Pump 2	Pump 1	Pump 2	Pump 1	Pump 2

Wastewater Facilities									
Aspen WWTP		Stables Lift Station		Wagon Wheel Lift Station		MHE Lift Station		Dharma Ocean Lift Station	
Pump 1	Pump 2	Pump 1	Pump 2	Pump 1	Pump 2	Pump 1	Pump 2	Pump 1	Pump 2

Service Vehicles				
Truck 1	Truck 2	Truck 3	Truck 4	Truck 5

Equipment				
Vactor Truck	Dump Truck	Backhoe	Skid steer	Excavator

➤ **One Equipment Failure. No Vehicle Failures or updates to report**

- Pump 1 at MHE lift station is out of service

➤ **Accidents**

- No Accidents to report on

## **Operations Updates**

➤ **EIAF Grant initial meeting**

- Met with DOLA about the process

➤ **1 Leak on Palomino way**

- A main break was reported on Sunday December 29 the Break was isolated with minimal interruptions to service. Repaired on Monday the 30<sup>th</sup>.

➤ **Projects**

Winter Projects

- Facility cleaning
- Vehicle Maintenance
- Headworks Maintenance
- Equipment Maintenance

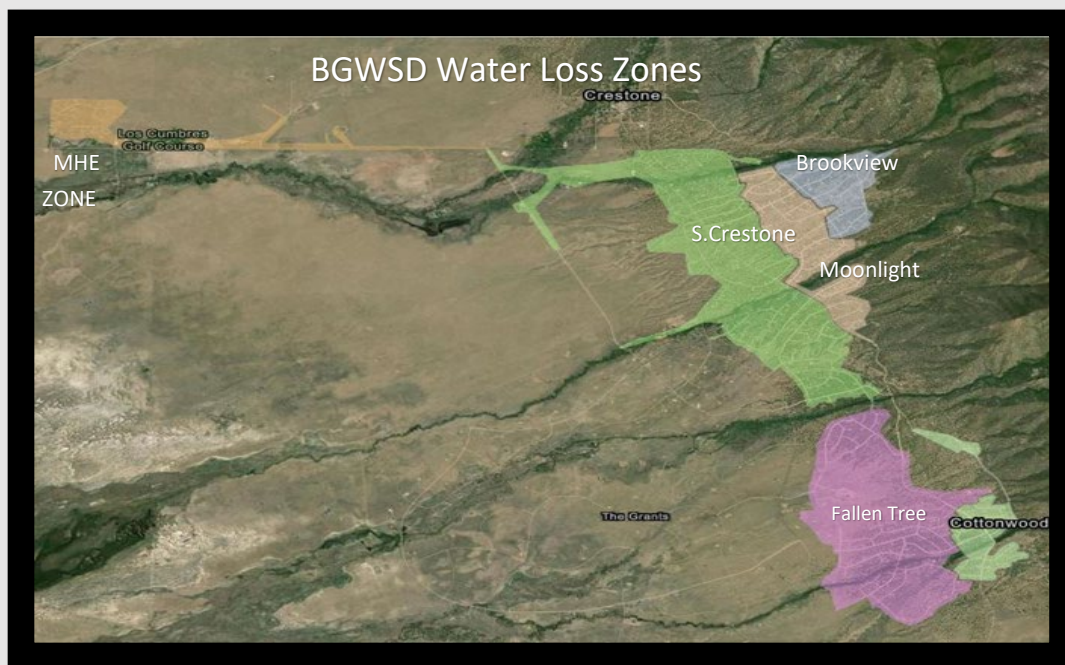
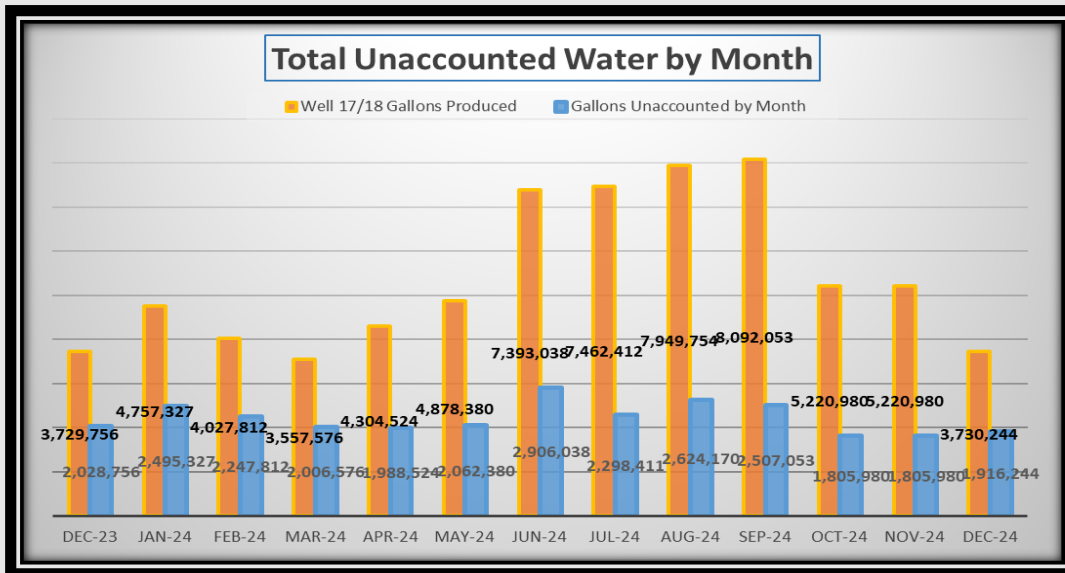
➤ **Unaccounted Water**

- Wells 17 and 18 produced 3,730,244 gallons of water in the month of December.
- The District sold its customers 1,814,000 gallons of water in the month of December, leaving 1,360,626 gallons unaccounted for.
- 36% of the water produced is unaccounted for in the month of December.

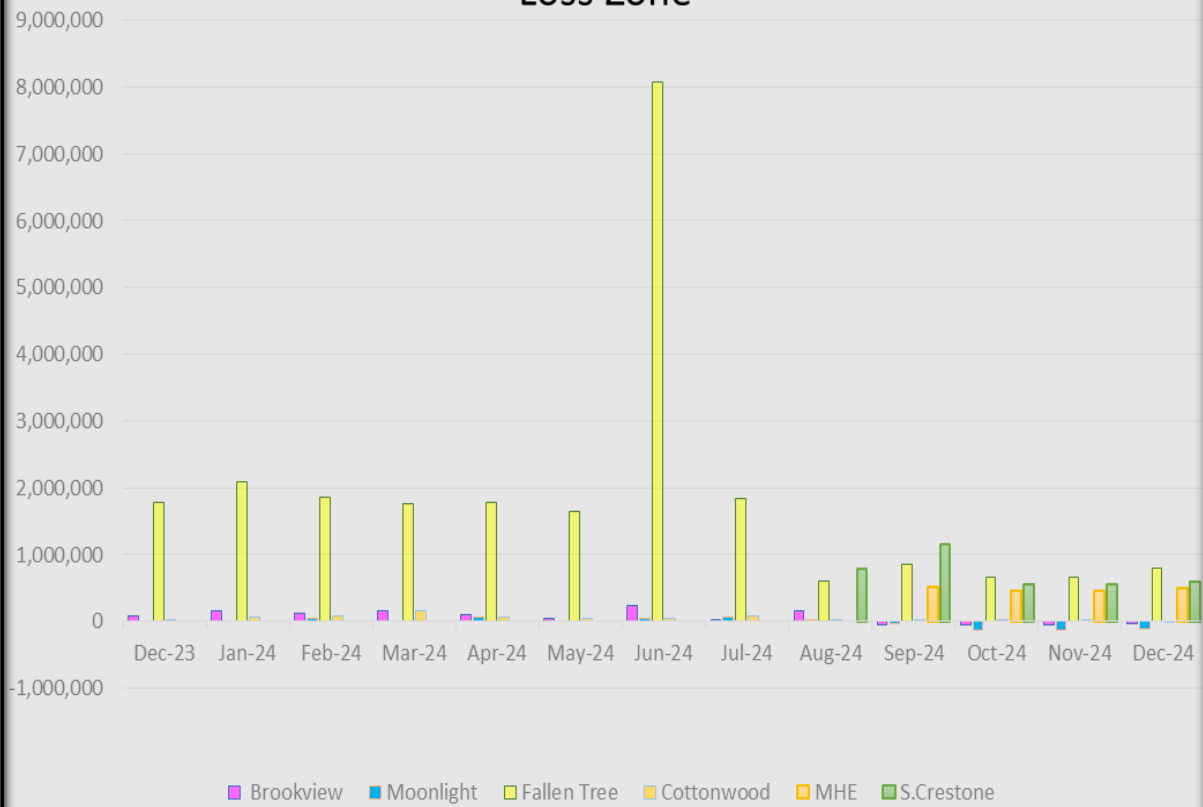
➤ **Aspen WWTP and Town of Crestone Loading**

- Aspen WWTP averaged 42% of hydraulic loading capacity in the month of December, the Town of Crestone contributed an average of 21% of the treatment plants hydraulic load.

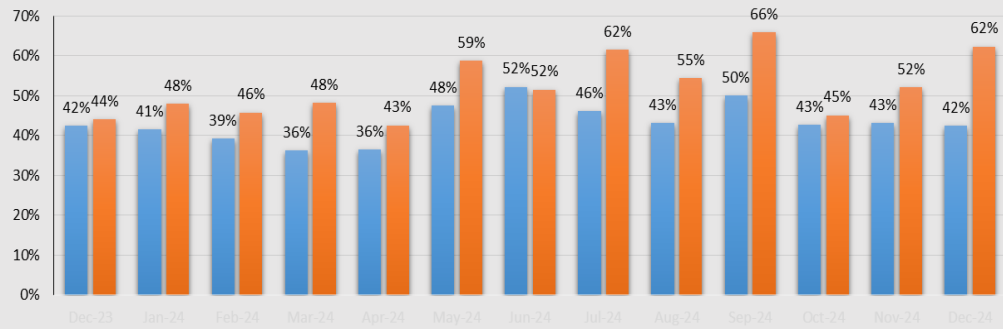
- Aspen WWTP averaged 62% of organic loading capacity in the month of December. The Town of Crestone contributed an average of 37% of the treatment plants organic load. The loading for this month was due to reduced sampling on BOD because the plant had an upset.



## Total Monthly Unaccounted in Gallons by Water Loss Zone



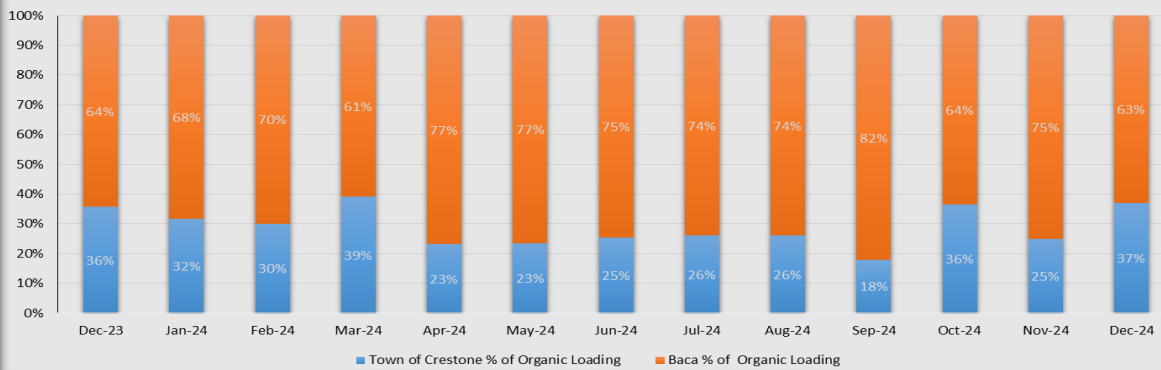
### Percentage of Plant Capacities by Month at Aspen Wastewater Treatment Plant



	Dec-23	Jan-24	Feb-24	Mar-24	Apr-24	May-24	Jun-24	Jul-24	Aug-24	Sep-24	Oct-24	Nov-24	Dec-24
Plant % of Hydraulic Capacity	42%	41%	39%	36%	36%	48%	52%	46%	43%	50%	43%	43%	42%
Plant % of Organic Capacity	44%	48%	46%	48%	43%	59%	52%	62%	55%	66%	45%	52%	62%

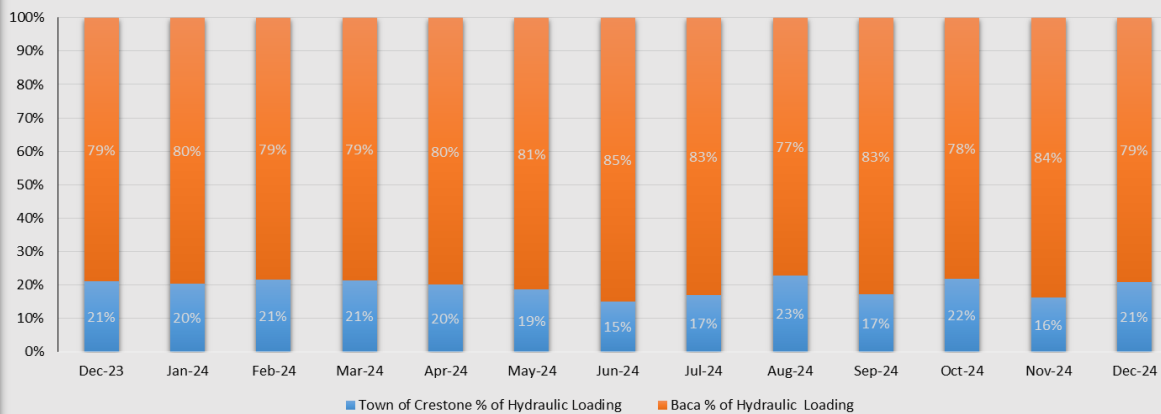
■ Plant % of Hydraulic Capacity ■ Plant % of Organic Capacity

### Average % of Total Organic Loading of Aspen Wastewater Treatment Plant by Month of 2023-2024



■ Town of Crestone % of Organic Loading ■ Baca % of Organic Loading

### Average % of Total Hydraulic Loading of Aspen Wastewater Treatment Plant by Month 2023-2024



■ Town of Crestone % of Hydraulic Loading ■ Baca % of Hydraulic Loading