

Baca Grande Water and Sanitation District
Monthly Operations Report

October 16th, 2024



Confined Space Entry to Remove Roots from a manhole



The Removed Roots

Facilities and Staff Updates

In Service

Repaired
last month

Out of
Service

Water Facilities					
Well 18	Moonlight Transfer Station	Ridgeview Transfer Station	Fallen Tree Transfer Station	Pinecone Booster Station	Shumei Booster Station

Pump 1	Pump 2	Pump 1	Pump 2	Pump 1	Pump 2	Pump 1	Pump 2	Pump 1	Pump 2	Pump 1	Pump 2
--------	--------	--------	--------	--------	--------	--------	--------	--------	--------	--------	--------

Wastewater Facilities									
Aspen WWTP		Stables Lift Station		Wagon Wheel Lift Station		MHE Lift Station		Dharma Ocean Lift Station	
Pump 1	Pump 2	Pump 1	Pump 2	Pump 1	Pump 2	Pump 1	Pump 2	Pump 1	Pump 2

Service Vehicles				
Truck 1	Truck 2	Truck 3	Truck 4	Truck 5

Equipment				
Vactor Truck	Dump Truck	Backhoe	Skid steer	Excavator

- **No New Equipment or Vehicle Failures or updates to report**
 - Pump2 motor at Ridgeview TS is out of service. Motor is being quoted, will be ordered as soon as possible.

- **Accidents**
 - No Accidents to report on

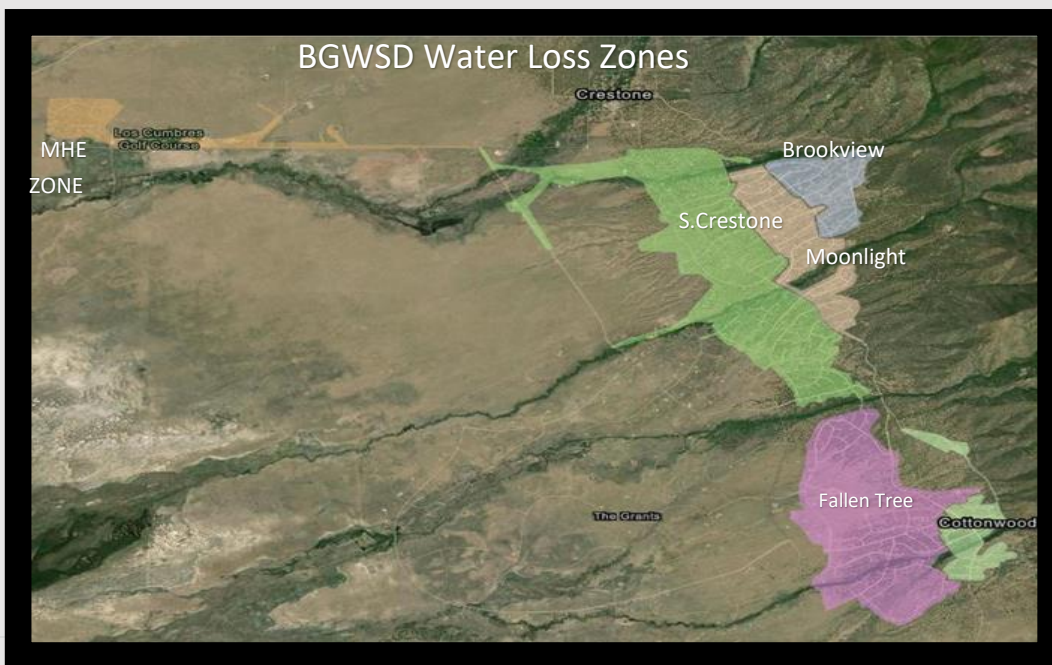
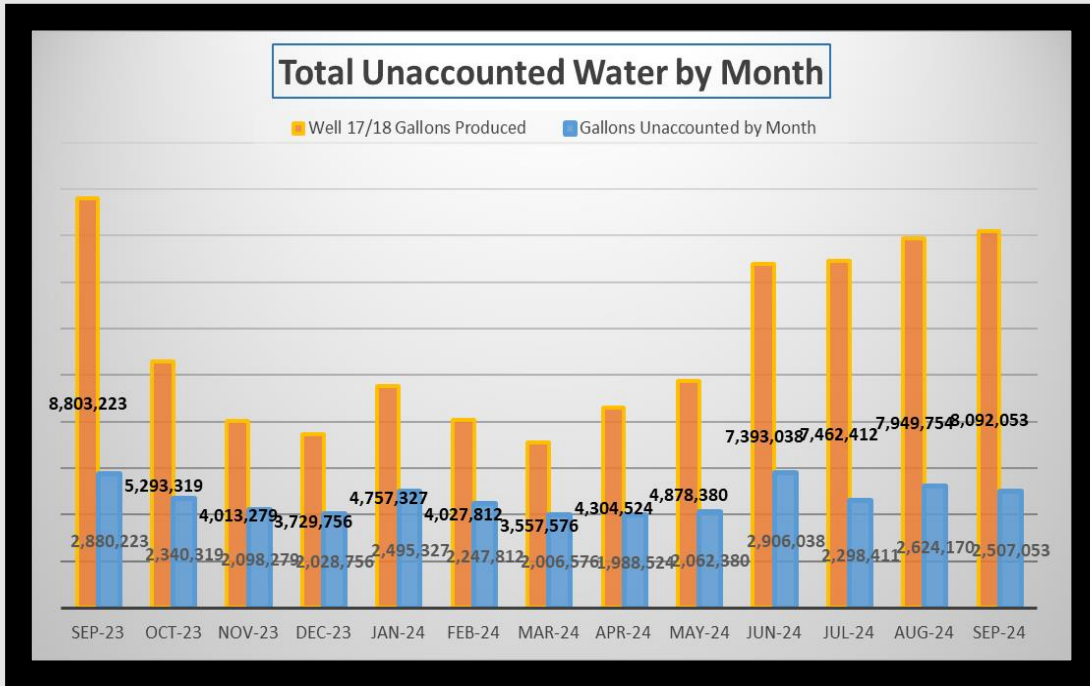
Operations Updates

- **Aspen Wastewater Treatment Plant**
 - Had Ev Studios Hvac and Electrical engineers come to do an evaluation on Aspen WWTP. Waiting on their report to continue work on the PER for the Dola Grant.
 - Waiting on Vendola Mechanical Contractors to supply Quotes for some repairs.

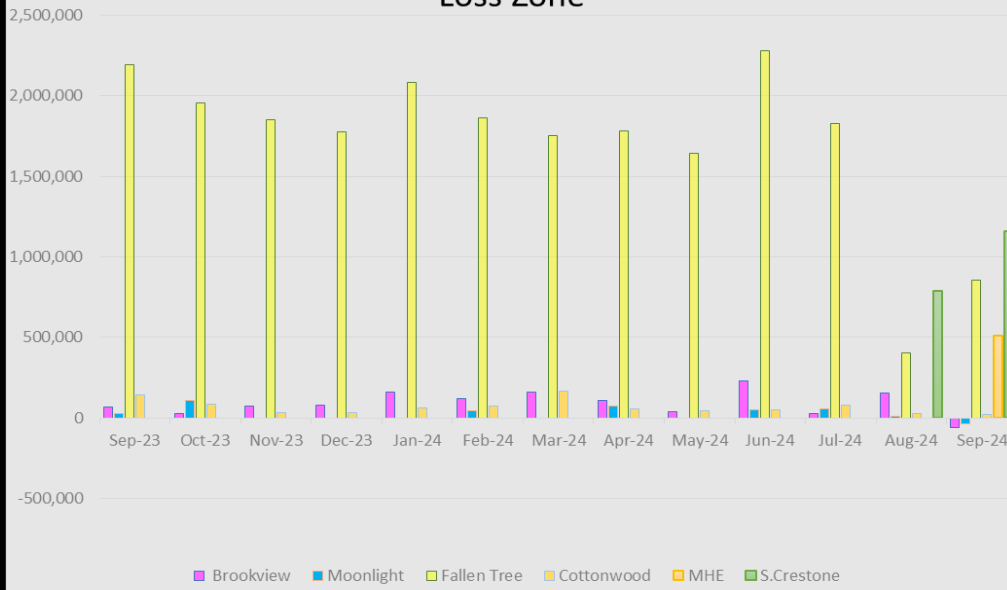
- **Lead and Copper Service Line inventory initial submission CDPHE completed**

- Will continue to maintain a service line inventory and update as the system grows.
- **Main Office Roof Inspection For Potential Roof Replacement**
 - Synergy Roofing and Solar Contractors and did an inspection to price potential new roofing.
- **One Leak Found in Fallen Tree**
 - One Leak found Thursday 10/10 and Repaired.
- **S. Crestone tank painting postponed**
 - Due to the temperature requirements of the paint and the lead times to acquire the paint we will need to postpone till mid to late spring.
- **Projects**
 - Distribution system meters had their first full read in September. The September read is in. The preliminary data we have is starting to show good information. So we are working on a plan to start addressing the loss. Will update as more data gets collected.
 - Summer annual maintenance projects are under Way
 - Valve Maintenance- In process
 - Collection System Cleaning- In Process
 - Collection System Inspections-In-Process
 - Fire Hydrant Maintenance- Completed
 - Dig List (various projects that require excavation)- In Process
 - Spanish creek manhole rehab moving towards a Structural Liner instead of replacement. Reduced cost and time out of service
 - Facility Weed Control-In Process
- **Unaccounted Water**
 - Wells 17 and 18 produced 8,092,053 gallons of water in the month of September
 - The District sold its customers 5,585,000 gallons of water in the month of September, leaving 2,507,053 gallons unaccounted for.
 - 31% of the water produced is unaccounted for in the month of September.
- **Aspen WWTP and Town of Crestone Loading**
 - Aspen WWTP averaged 50% of hydraulic loading capacity in the month of September, the Town of Crestone contributed an average of 17% of the treatment plants hydraulic load.

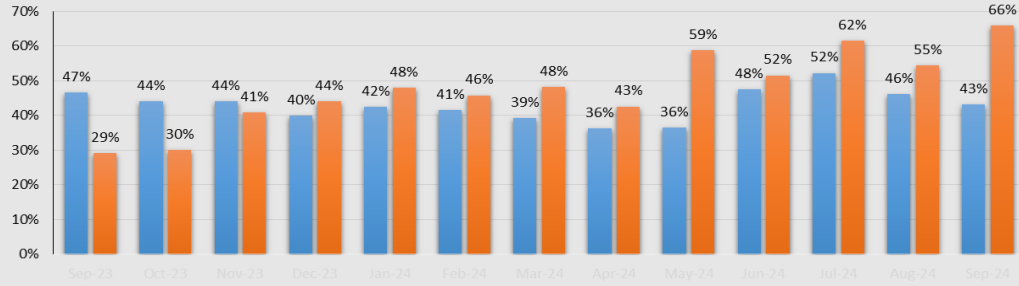
- Aspen WWTP averaged 66% of organic loading capacity in the month of September. The Town of Crestone contributed an average of 18% of the treatment plants organic load.



Total Monthly Unaccounted in Gallons by Water Loss Zone



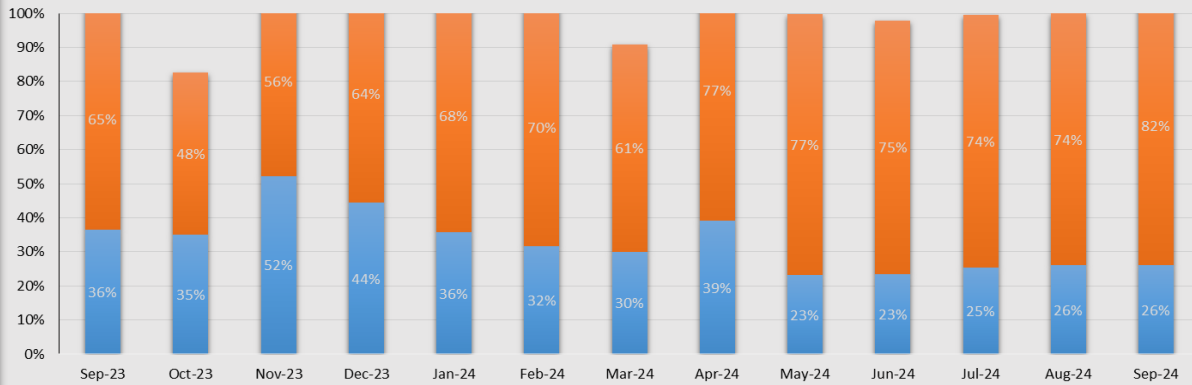
Percentage of Plant Capacities by Month at Aspen Wastewater Treatment Plant



	Sep-23	Oct-23	Nov-23	Dec-23	Jan-24	Feb-24	Mar-24	Apr-24	May-24	Jun-24	Jul-24	Aug-24	Sep-24
Plant % of Hydraulic Capacity	47%	44%	44%	40%	42%	41%	39%	36%	36%	48%	52%	46%	43%
Plant % of Organic Capacity	29%	30%	41%	44%	48%	46%	48%	43%	59%	52%	62%	55%	66%

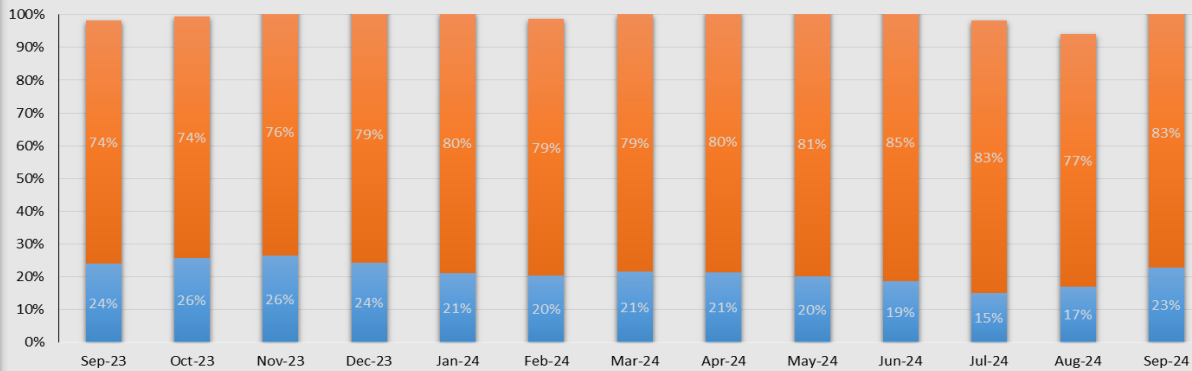
■ Plant % of Hydraulic Capacity ■ Plant % of Organic Capacity

Average % of Total Organic Loading of Aspen Wastewater Treatment Plant by Month of 2023-2024



■ Town of Crestone % of Organic Loading ■ Baca % of Organic Loading

Average % of Total Hydraulic Loading of Aspen Wastewater Treatment Plant by Month 2023-2024



■ Town of Crestone % of Hydraulic Loading ■ Baca % of Hydraulic Loading

